



## 'The Commitments'

**Madeleine Brown**  
[mbhandmade.com](http://mbhandmade.com)  
[madeleinebrown@optusnet.com.au](mailto:madeleinebrown@optusnet.com.au)

'The Commitments' range of jewellery stemmed from an opportunity for Queensland artist, Madeleine Brown to be mentored by Master Jeweller, Daniel Bentley.

"I wanted to create a series of slightly way-out and wonderful rings that would inspire potential clients to think outside the square about their engagement or wedding rings", says Madeleine. "With Daniel's advice and support, I've employed a whole range of unusual textures, finishes and forms to kick start the commissioning process."

Madeleine's work is available in Queensland through Mart, Indigo Cactus and the Museum of Brisbane store.



## Featured Firm

**Marchese + Partners**  
**(61 7) 3018 5055**  
[marchesepartners.com](http://marchesepartners.com)  
[info@marchesepartners.com.au](mailto:info@marchesepartners.com.au)

Architectural firm Marchese + Partners have opened a new base of operations in Brisbane to meet the unprecedented demand from their clients in the Sunshine State. Senior Associate Partner Stewart Dean, will head up the new office, which has already begun work on a number of Queensland projects. These include Surfer's Paradise's new 'evo' residential towers set to rival 'Q1' as the tallest building on the Gold Coast, and 'Freshwater' (pictured) a 67-unit holiday development in Freshwater Street, Hervey Bay, that will begin construction in the second quarter of 2008.

Sydneysiders would also know the work of the well-established firm, as they were responsible for the design of the famous Bondi Icebergs.

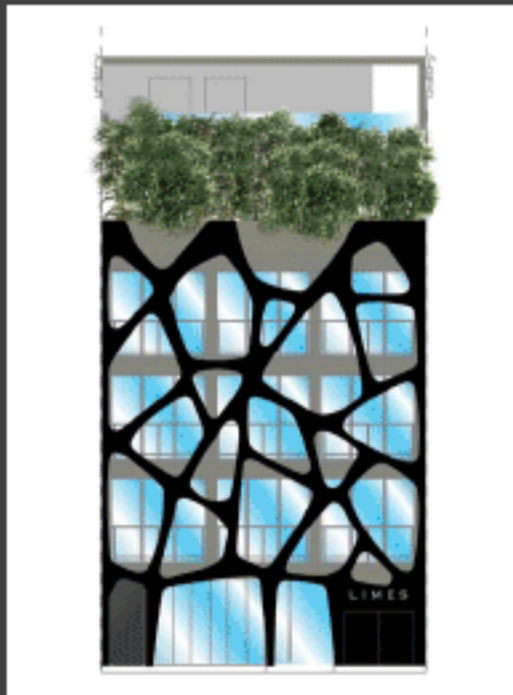
"It's a natural progression for Marchese + Partners to create a Queensland base to service our burgeoning portfolio of projects there," says Steve Zappia, Principal and Managing Director in Australia. "Queensland is the major growth corridor for property development in Australia, and we see that our unique design services may be of assistance to the local development industry during this exciting period of development."

## Fresh Lime?

**Limes Hotel**  
**(61 7) 3620 4800**  
[limeshotel.com.au](http://limeshotel.com.au)

The Limes Hotel is the latest project from Design Hotels, and is set to be a popular new destination for visitors to Fortitude Valley, Brisbane.

Inspired by The Valley's natural beauty, the hotel has been designed by Queensland's omnipresent design star, Alexander Lotersztain. The result is a stunning urban retreat complete with tapas bar, coffee shop, business facilities, open air roof-top bar and cinema. The Hotel is set to open in May 2008.



## RAIA Queensland Announcement

**RAIA**  
**(61 7) 3109 7320**  
[gld@raia.com.au](mailto:gld@raia.com.au)

The RAIA Queensland Chapter would like to announce that Mr Bruce Medek from Gall and Medek is the new State President, taking over from Ian Mitchell.

## Jettison Wove

**Artisan**  
**(61 7) 3215 0800**  
[artisan.org.au](http://artisan.org.au)  
[admin@artisan.org.au](mailto:admin@artisan.org.au)

This exhibition aims to discover a balance, where Indigenous culture embraces the often discarded product to give it a second life in the form of a new body of work.

Runs from 10 April until 18 May 2008.

NOTE: artisan was formally known as Craft Queensland



## Conrad Gargett Gets Educational

**(61 7) 3229 3555**  
[conradgargett.com.au](http://conradgargett.com.au)  
[mail@conradgargett.com.au](mailto:mail@conradgargett.com.au)

Conrad Gargett has recently completed the Student Learning Support Centre building at the Queensland University of Technology.

This new building complex provides a new heart for the Kelvin Grove campus and links a number of existing elements with a vibrant external environment including a large amphitheatre.

It houses the Student Centre, Student Administration and Teaching and Learning Support Services on the upper levels, rising from a podium incorporating the amphitheatre, a 480-seat lecture theatre, and a 24-hour collaborating learning computer lab over a multi-deck car park.



## Qld Design Goes to Asia

IQ spoke with designer Marc Harrison recently, and found out about a special collaborative project between the Taiwan Design Centre and Queensland Government design, presenting Queensland design to the Asian market.

"Lotersztain [Alexander], Steendyk [Brian] and I were invited to Taipei to talk about Queensland design and exhibit from our collections," said Harrison. "It was an intensive week of seminars and meetings with local industry, the Taiwanese Design Centre, and importantly, local design students. First of its kind in Taiwan."

Sponsored by Trade Queensland and Eslite Book Store in Taipei, the event was a spin-off from the Design5 project, with the objective to promote Queensland Design.

## SPACE CONTRACT

Contemporary furniture for original interiors.  
**07 3253 6000**

ZANOTTA  
SMALLWIRE TABLES



KARTELL  
LIZZ CHAIR

CLICK FOR MORE